

The logo for Essential Trading Systems Corp. (ETC) is displayed in a bold, red, sans-serif font. The letters 'E', 'T', and 'C' are stylized with a slight 3D effect and are set against a background of blue and white curved lines that suggest motion and technology.

ESSENTIAL TRADING SYSTEMS CORP.

The possibilities are endless.

VM-2 USB PTT Belt Pack User Guide



THE POSSIBILITIES ARE *ENDLESS.*

9 Austin Drive, Marlborough, CT 06447 (860) 295-8100 www.essentialtel.com sales@essentialtel.com

Table of Contents

Introduction 3

Parts List..... 3

Windows 7 Audio Device Hardware Configuration 4

Specifications..... 7

VM-2 Hardware Product Limited Warranty 8

Introduction

The VM-2 is a compact “belt pack” style USB audio device with integrated PTT feature. The VM-2 is designed to integrate with 3rd party VoIP software applications which utilize a “Hot Key” sequence to activate PTT (Push To Talk). The VM-2 will output the “F8” keyboard key for use with other 3rd party applications. The VM-2 has the “QD” style connector to allow use with Plantronics’ popular HW-251N monaural headset.

The VM-2 does not require any special drivers to be installed as it uses default Windows USB audio drivers for its operation.

NOTE: The application software versions used in this guide are Windows 7, and Microsoft .NET Framework 4. If you are using any other versions of these products your windows may look different.

Features:

- Plug and Play Installation
- Compact, lightweight design
- PTT button on top for Ambidextrous use
- USB 2.0 Compliant

Parts List

The VM-2 (Figure A) (shown with optional Plantronics HW-251N headset) comes equipped with a USB “A” 2.0 cable (Figure B)



Figure A



Figure B

Windows 7 Audio Device Hardware Configuration

Click on the Sounds icon located in the Control Panel (Figure 15).

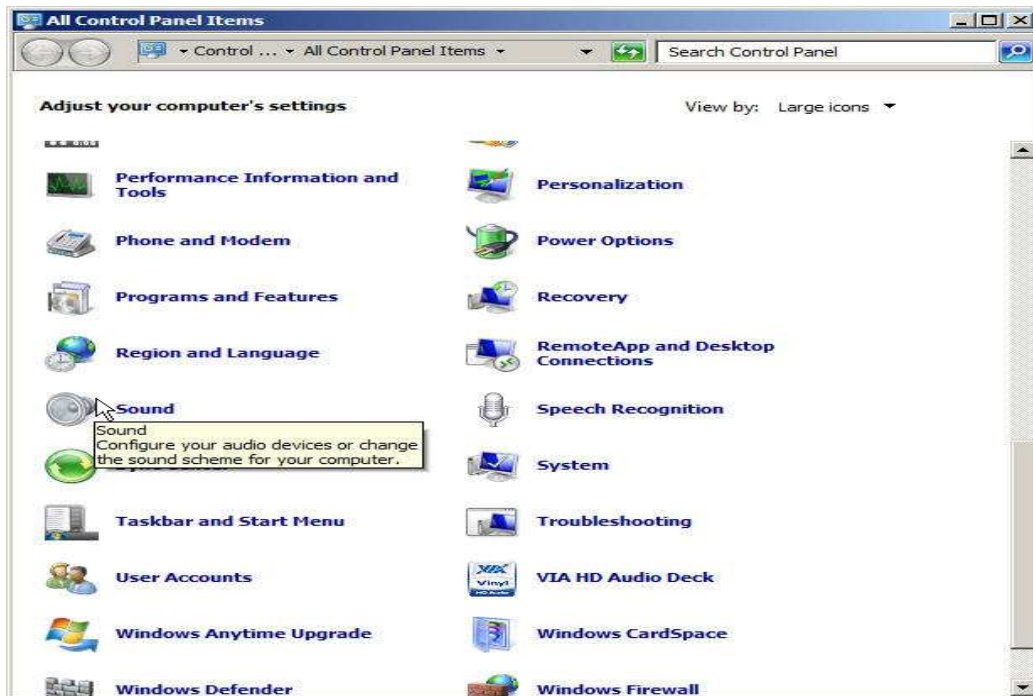


Figure 15

In the Sound window, choose the Playback tab, select Speakers ETC VM-2 Default Device, and click the Properties button (Figure 16). In the Speakers Properties window, choose the Levels tab. Adjust the Speakers level to 90, the Microphone level to 0 (zero), and MUTE the Microphone (Figure 17).

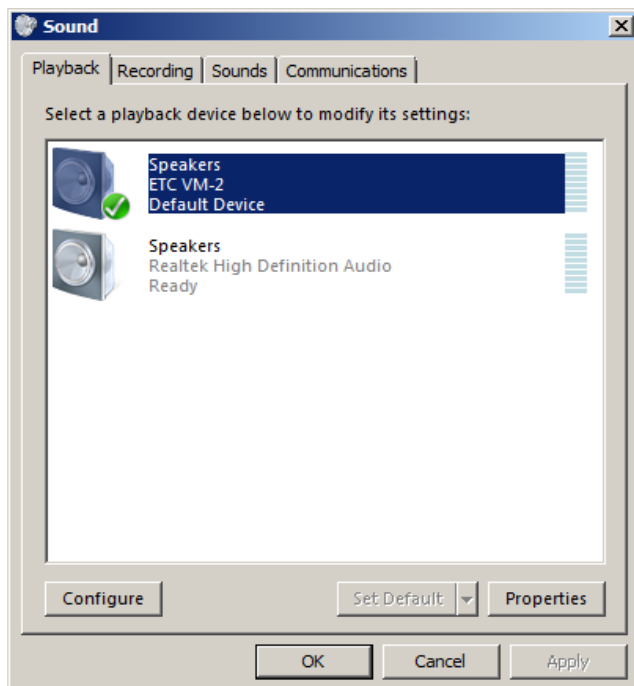


Figure 16

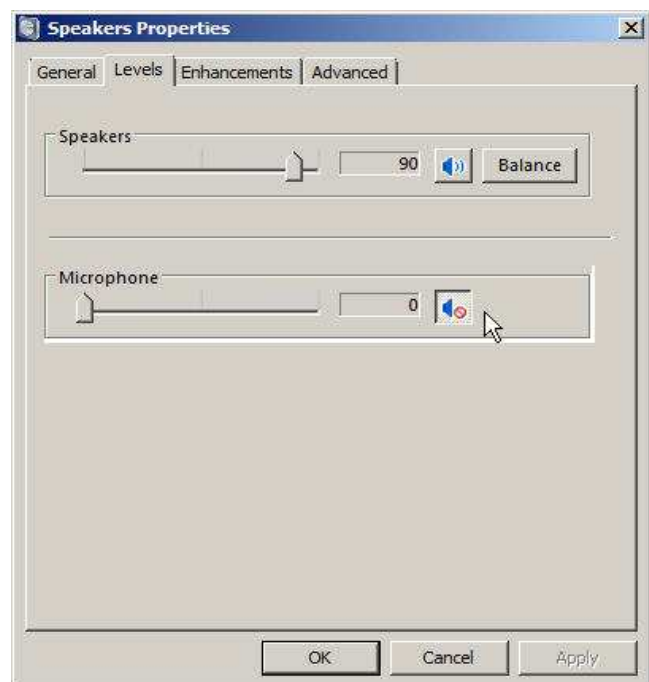
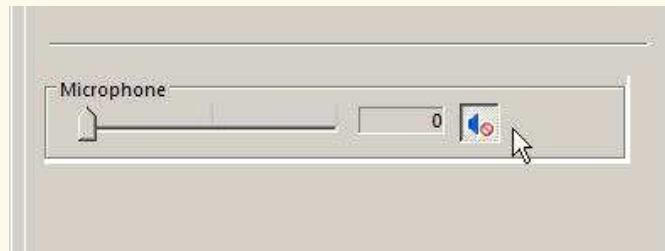


Figure 17

ATTENTION: The microphone speaker icon must be in mute mode. An un-muted microphone will cause echo on the network and down-time for troubleshooting your installation.



Click the OK button to return to the Sound window (Figure 18). In the Sound window, choose the Recording tab, select Microphone ETC VM-2 Default Device, and click the Properties button (Figure 19).

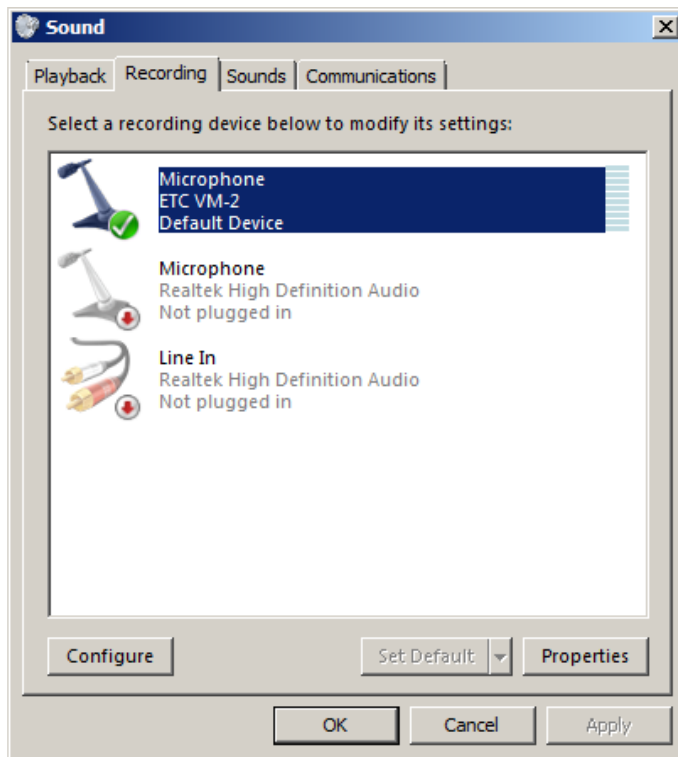


Figure 18

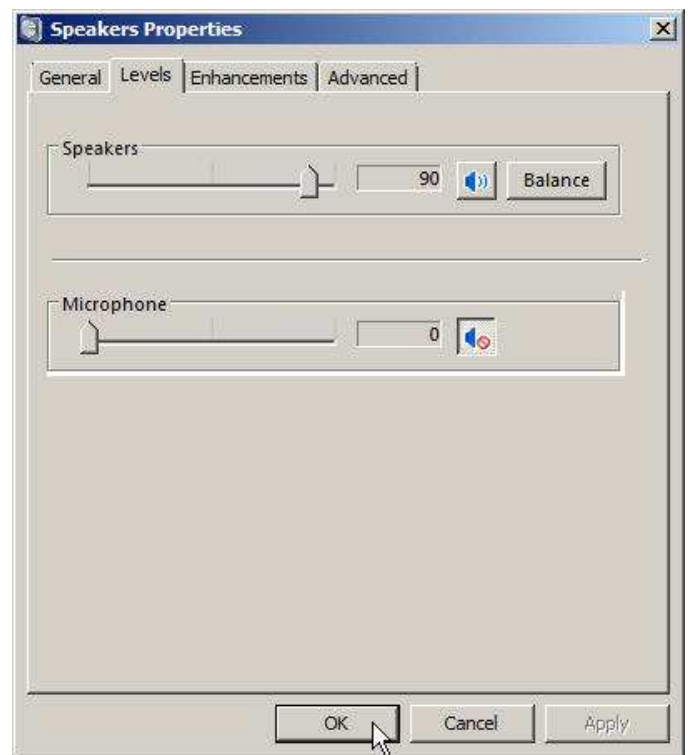


Figure 19

In the Microphone Properties window, choose the Levels tab. Adjust the Microphone level to 80 (Figure 20). Click the OK button to return to the Sound window (Figure 21).

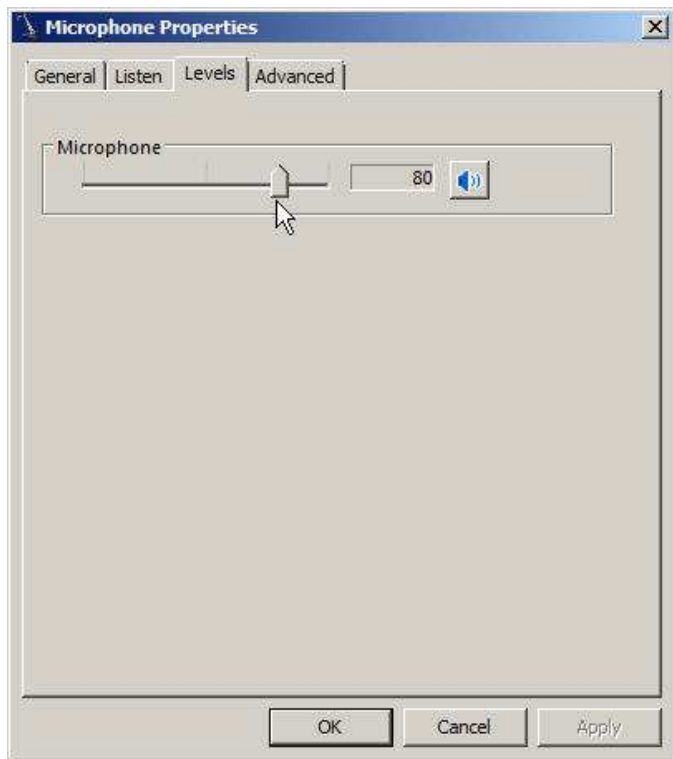


Figure 20

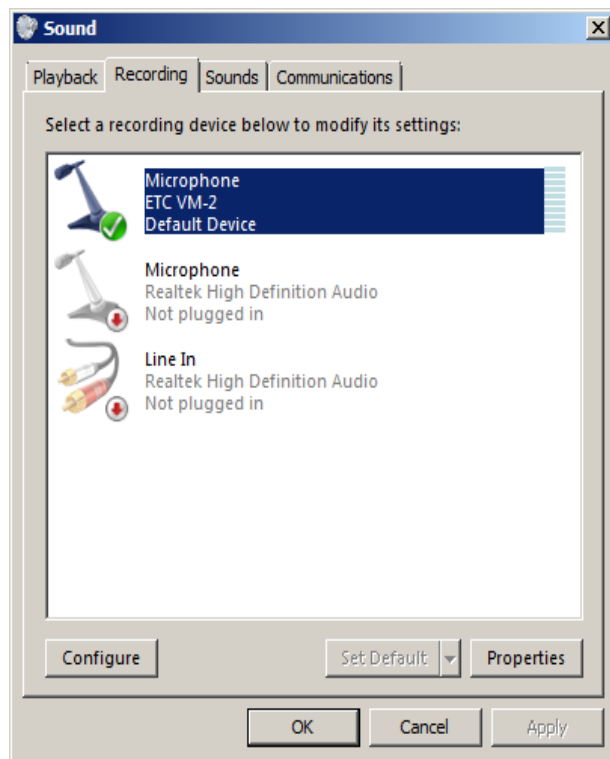


Figure 21

The VM-1 is now configured and ready to work with the VoIP software of your choosing.

Specifications

Physical

- Size.....100mm H x 48mm W x 29mm D
(4"H x 1.75"W x 1.0"D)
- Weight.....227g (8oz) (VM-1 unit only)
- Case.....ABS 94HB Plastic
- HW251N....."Optional" Plantronics monaural headset
- USB 'A' style connector

Power (USB)

- Idle Current.....120mA
- Max Current..... 400mA

Audio

- Frequency Response.....150Hz- 6kHz
- Coil Impedance.....8ohm +/- 15%
- Resonance Frequency...180Hz +/-20%
- Output S.P.L.....89dB +/- 3dB
- QD Style Headset connector

Environmental

- Temperature Range.....-40c to +85c
- Humidity.....0-95% Non Condensing

VM-2 Hardware Product Limited Warranty

ETC warrants that your ETC hardware product shall be free from defects in material and workmanship for the length of time specified in the Warranty Periods below, beginning from the date of purchase. Except where prohibited by applicable law, this warranty is nontransferable and is limited to the original purchaser. This warranty gives you specific legal rights, and you may also have other rights that vary under local laws

Remedies

ETC's entire liability and your exclusive remedy for any breach of warranty shall be, at ETC's option, (1) to repair or replace the hardware, or (2) to refund the price paid, provided that the hardware is returned to the point of purchase or such other place as ETC may direct with a copy of the sales receipt or dated itemized receipt. Shipping and handling charges may apply except where prohibited by applicable law. ETC may, at its option, use new or refurbished or used parts in good working condition to repair or replace any hardware product. Any replacement hardware product will be warranted for the remainder of the original warranty period or thirty (30) days, whichever is longer or for any additional period of time that may be applicable in your jurisdiction. This warranty does not cover problems or damage resulting from (1) accident, abuse, misapplication, or any unauthorized repair, modification or disassembly; (2) improper operation or maintenance, usage not in accordance with product instructions or connection to improper voltage supply; or (3) use of consumables, such as replacement batteries, not supplied by ETC except where such restriction is prohibited by applicable law.

How to Obtain Warranty Support

Before submitting a warranty claim, we recommend you contact ETC support at support@essentialtel.com for technical assistance. Valid warranty claims are generally processed through the point of purchase during the first thirty (30) days after purchase; however, this period of time may vary depending on where you purchased your product - please check with ETC for details. Warranty claims or other product related questions should be addressed directly to ETC. The addresses and customer service contact information for ETC can be found in the documentation accompanying your product and on the web at www.essentialtel.com.

Limitation of Liability

ETC SHALL NOT BE LIABLE FOR ANY SPECIAL, INDIRECT, INCIDENTAL OR CONSEQUENTIAL DAMAGES WHATSOEVER, INCLUDING BUT NOT LIMITED TO LOSS OF PROFITS, REVENUE OR DATA (WHETHER DIRECT OR INDIRECT) OR COMMERCIAL LOSS FOR BREACH OF ANY EXPRESS OR IMPLIED WARRANTY ON YOUR PRODUCT EVEN IF ETC HAS BEEN ADVISED OF THE POSSIBILITY OF SUCH DAMAGES. Some jurisdictions do not allow the exclusion or limitation of special, indirect, incidental or consequential damages, so the above limitation or exclusion may not apply to you.

©Essential Trading Systems Corps. All intellectual property rights in this publication are owned by Essential Trading Systems Corps. and are protected by United States copyright laws, other applicable copyright laws and international treaty provisions. Essential Trading Systems Corps. Retains all rights not expressly granted. No part of this publication may be reproduced in any form whatsoever or used to make any derivative work without prior written approval by Essential Trading Systems Corps. No representation of warranties for fitness for any purpose other than what is specifically mentioned in this guide is made either by Essential Trading Systems Corps. or its agents. Essential Trading Systems Corp. reserves the right to revise this publication and make changes without obligation to notify any person of such revisions or changes. Essential Trading Systems Corps. may make improvements or changes in the product(s) and/or the program(s) described in this documentation at any time. All rights reserved.

Endorsement of ETC or ETC's products is not implied by use of other companies product names.

To ensure highest quality, ETC reserves the right to change product specifications at any time.

Windows® is a registered trademark of Microsoft Corporation in the United States and other countries
Linux® is a registered trademark of Linus Torvalds.