

# ETC



**ESSENTIAL TRADING SYSTEMS CORP.**

*The possibilities are endless.*

## VCC-3

# USB Desktop Command Console

## Installation Guide



**THE POSSIBILITIES ARE *ENDLESS.***

188 Norwich Ave, Colchester, CT 06415 (860) 295-8100 [www.essentialtradingystems.com](http://www.essentialtradingystems.com) [sales@essentialtel.com](mailto:sales@essentialtel.com)

# Table of Contents

Introduction..... 3

Parts List..... 4

Physical Description..... 5

Device Configuration..... 7

Specifications..... 9

Quick Setup Examples..... 10

Warranty Info..... 12

# Introduction

ETC's VCC-3 USB Desktop Command console is designed to integrate with any PC Based Dispatch Software. In conjunction with a wired headset or PTT handset and phone, the VCC-3 provides an operator with simple functions for complex usage scenarios. Features include:

- RJ-9 ports for Phone and Phone Handset
- RJ-25 port for a PTT Handset Device or Plantronics HW series monaural wired headsets or Cisco phone headset port
- 8 pin mini-Din style connector for use with Plantronics HW series, stereo, wired headsets & PTT body pack
- Speaker Out Jack (Stereo)
- Foot Switch Input Jack
- USB 2.0 compliant port
- Gooseneck Microphone
- Left & Right Speaker Volume Control Knobs
- Channel Activity Indicator LED's
- Large PTT button
- Intuitive mode control switches for headset & telephony functions



# Parts List

The VCC-3 has numerous features & functions and to compliment these features & functions are several standard and optional components shown below. ETC has designed the VCC-3 to work with commonly available user interface devices such as, Plantronics headsets and wired / wireless PTT body packs as shown below.

## Standard Accessories:



USB Cable  
P/N-UO23-006



4-wire Satin cable RJ9-RJ9  
P/N-RJ9 to RJ9

## Optional Accessories:



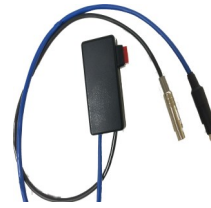
PTT Handset  
P/N: GO0897-IOM



Foot Switch  
P/N: FP115



4-wire Satin cable RJ9-RJ9  
P/N: RJ9C  
(Cisco headset port)



PTT Body Pak for  
HW Series Headset  
P/N: J2319 - Stereo  
P/N: J2318 - Mono



QD to RJ11 Coil Cord  
Adapter  
P/N: 26716-E01



Wireless PTT Headset  
Adapter, CA12  
P/N: 92900-01



6-wire cable RJ25-RJ25  
P/N: RJ25C  
(Plantronics CA12 base)



Headset, Mono, HW251  
P/N: 64336-31



Headset, Stereo, HW261N-DC  
P/N: 86872-01

# Physical Descriptions

## Back View



**H SET IN** : This port connects the telephone base, handset port to the VCC-3. This cable is a flat silver satin RJ-9 which comes with the VCC-3 as part of its accessories kit. The Cisco phone headset port also integrates with this port utilizing optional RJ9C cable accessory.

**H SET OUT** : This port connects the telephone handset to the VCC-3. This cable would typically be the telephone handset coil cord

**H / H SET** : This port can integrate an optional PTT (Press To Talk) handset, wired Plantronics HW Series monaural headset or wireless Plantronics CA12 . Use of the Plantronics headset requires an additional accessory cable to interface the QD style connector to the RJ-25 port of the VCC-3. Use of Plantronics CA12 base requires RJ25C cable.

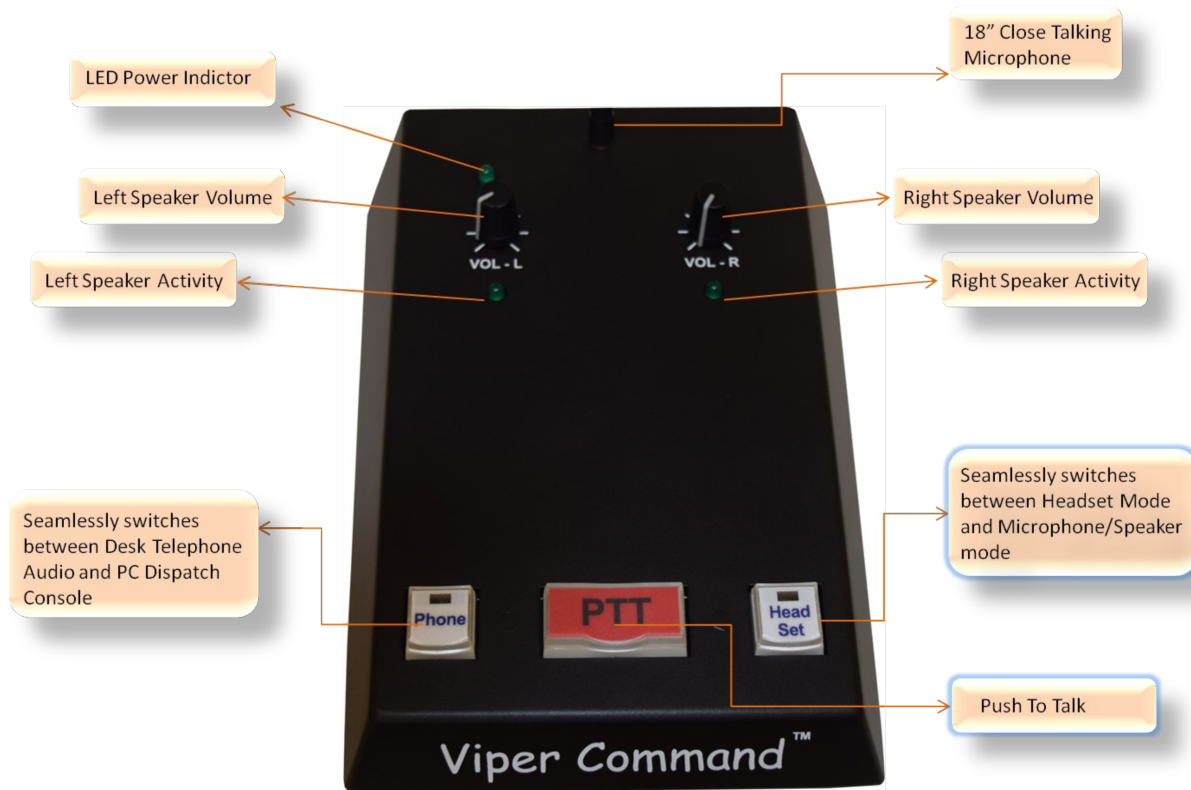
**SPKR** : This port allows connection of powered, stereo PC style speakers

**HEADSET** : This port is a 8 pin DIN style connector which is exclusively used for connecting a wired Plantronics HW Series stereo headset. This port has been design to allow use of the Plantronics, wired PTT body pack as well as ETC's PTT body pack.

**FOOT PEDAL** : This port allow connection of a foot switch. The foot switch acts as an alternate PTT button to the PTT button on the device. Pressing the foot switch will send the same 'hot key' sequence as the device's normal PTT button.

**USB** : A USB cable is plugged into this jack to connect the VCC-3 to a computer. Upon properly connecting the VCC-3 to your PC, it will automatically install using native Windows/Linux drivers. Please note, it can take several minutes for the OS to recognize new hardware and install drivers. Do not disconnect the VCC-3. The message "New Hardware Installed" will be displayed when the installation is complete.

## Top View



**L. Vol** : The VCC is capable of processing incoming stereo audio. This controls left side audio level. Note: this works best when Dispatch Software channels are set accordingly.

**R. Vol** : The VCC is capable of processing incoming stereo audio. This controls right side audio level. Note: this works best when Dispatch Software channels are set accordingly.

**Activity** : LED's are provided as visual indication to the user of audio activity on a respective channel

**Phone** : When this button is pressed, telephone audio is routed to a connected headset and Dispatch Software audio is routed to attached speakers. When pressed the button will light up indicating the function is active. When this mode is inactive you may use your telephone handset normally.

**PTT** : When this button is pressed the VCC-3 sends a hotkey sequence to the Dispatch Software client application. Which channel the PTT button activates is configured via the WAVE client. The hot key set is: F8

**Headset** : When this button is pressed, audio from the Dispatch Software client is directed to the connected headset. When pressed the button will light up indicating the function is active.

# Windows 7 Audio Device Hardware Configuration

Click on the **Sounds** icon located in the **Control Panel** (Figure 1) or right click the speaker icon in your system tray then click Playback Devices.

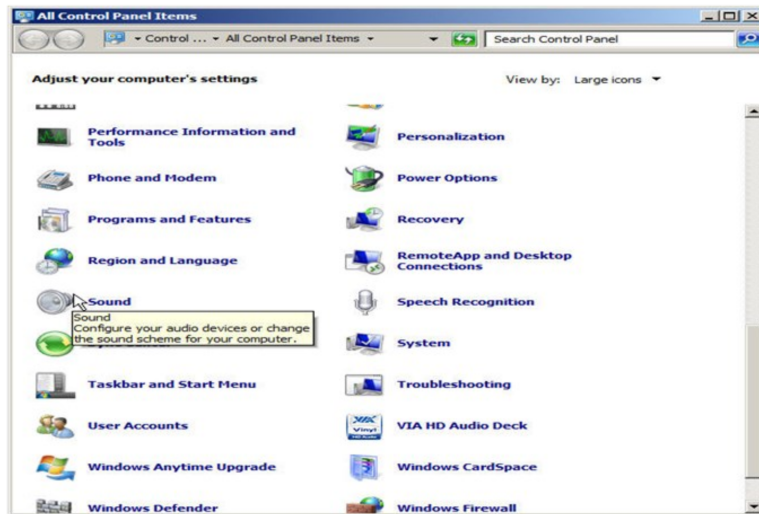


Figure 1

In the **Sound** window, choose the **Playback** tab, select **Speakers ETC VCC-3 Default Device** (Figure 2) and click the **Properties** button. In the **Speakers Properties** window (Figure 3), choose the **Levels** tab. Adjust the **Speakers** level to 75, the **Microphone** level to 0 (zero), and **MUTE the Microphone**.

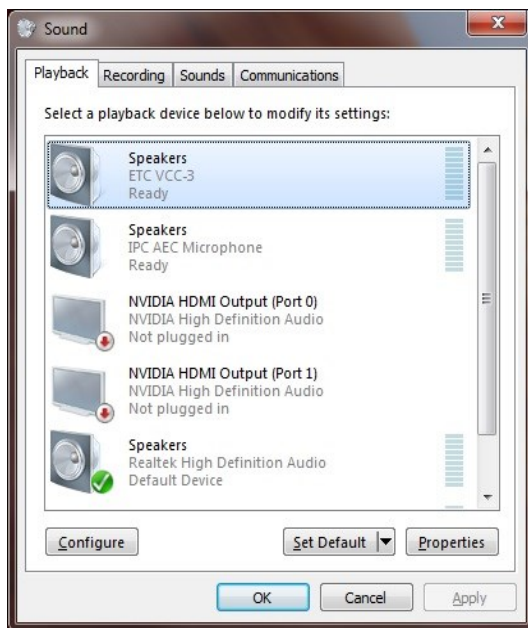


Figure 2

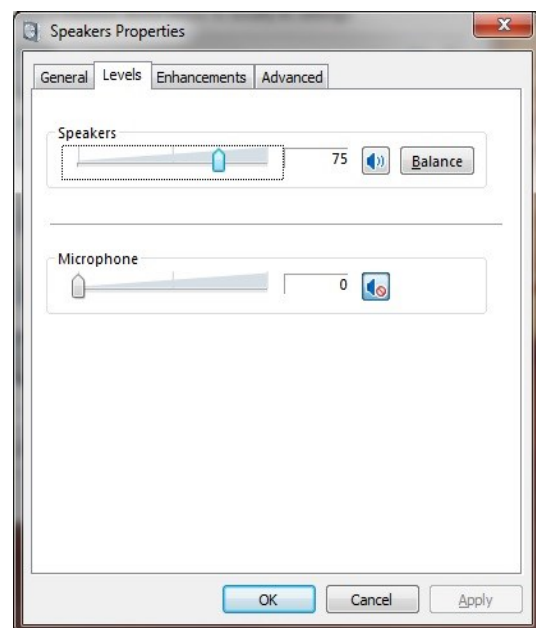


Figure 3

Click the **OK** button to return to the **Sound** window . In the **Sound** window, choose the **Recording** tab (Figure 4) , select **Microphone ETC VCC-3** and click the **Properties** button (Figure 5). Adjust Microphone level to 75, then click OK to return to Sound window. Click Ok to close the sound window.



Figure 4

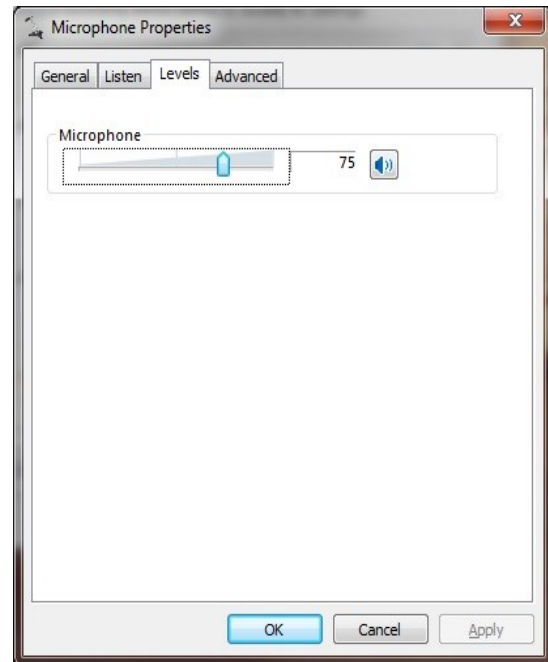


Figure 5



## Specifications

- Frequency Response: 200Hz- 19kHz
- Distortion: < .1%
- Analog output range: -40 dB to +8 dB
- Headset/Handset Impedance: Rx-10kOhm, Tx - 50 Ohm
- RJ-9's for telephony interconnect, telephony standard 600 Ohm Impedance
- 8 pin DIN for stereo headset & PTT interconnect
- USB 'B' style connector
- USB powered
- 3.5 mm jacks for PC speaker & foot pedal connectivity
- 350mA Nominal Current Consumption
- Size: 6.25" W x 2" H x 8" D
- Weight: 42 ounces
- 6 BTUs Per Hour Output

## Jack Pinouts:

### J1 (H SET IN)

P1– Mic +  
P2– Ear -  
P3– Ear +  
P4– Mic -

### J2 (H SET OUT)

P1– Mic +  
P2– Ear -  
P3– Ear +  
P4– Mic -

### J3 (H/H Set) Handset or Mono Headset

P1– PTT  
P2– Ear -  
P3– Mic +  
P4– Mic -  
P5– Ear +  
P6– PTT Common

### J4 (SPEAKER)

Tip– Left Audio  
Ring– Right Audio  
Sleeve– Common (Ground)

### J5 (Stereo Headset)

P1– Mic +  
P2– Mic -  
P3– L Ear-  
P4– L Ear +  
P5– R Ear -  
P6– R Ear +  
P7– PTT  
P8– PTT Com  
P9– Gnd  
P10– Gnd  
P11– Gnd

### J6 (Foot Pedal)

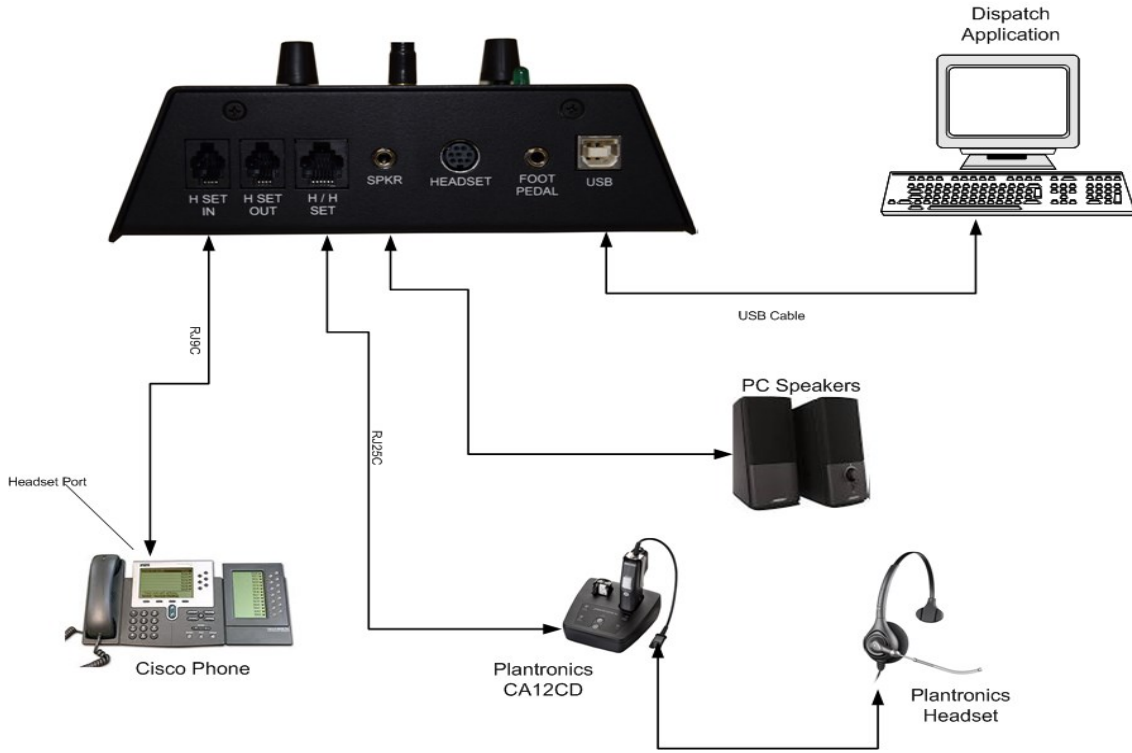
Tip– PTT  
Ring– PTT Com  
Sleeve– Gnd

This equipment has been tested and found to comply with the limits for a Class A digital device, pursuant to part 15 of the FCC Rules. These limits are designed to provide reasonable protection against harmful interference when the equipment is operated in a commercial environment. This equipment generates, uses and can radiate radio frequency energy and, if not installed in accordance with the instruction manual, may cause harmful interference to radio communications. Operation of this equipment in a residential area is likely to cause harmful interference in which case the user will be required to correct the interference at his own expense.

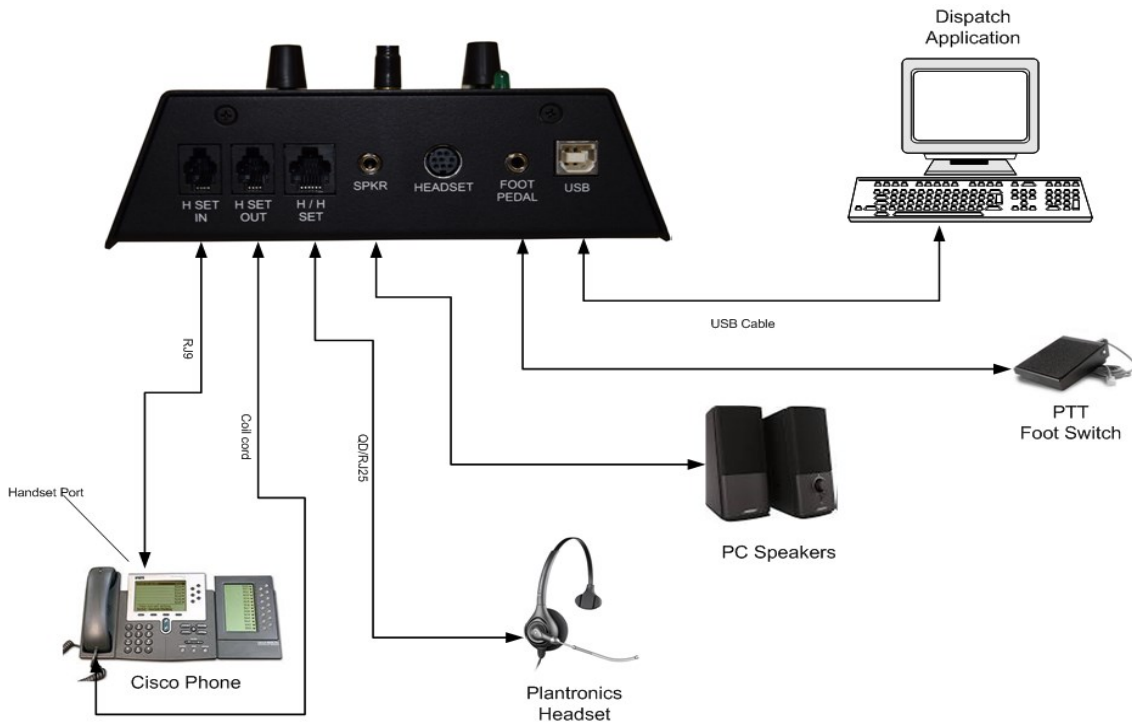


# Quick Setup Examples

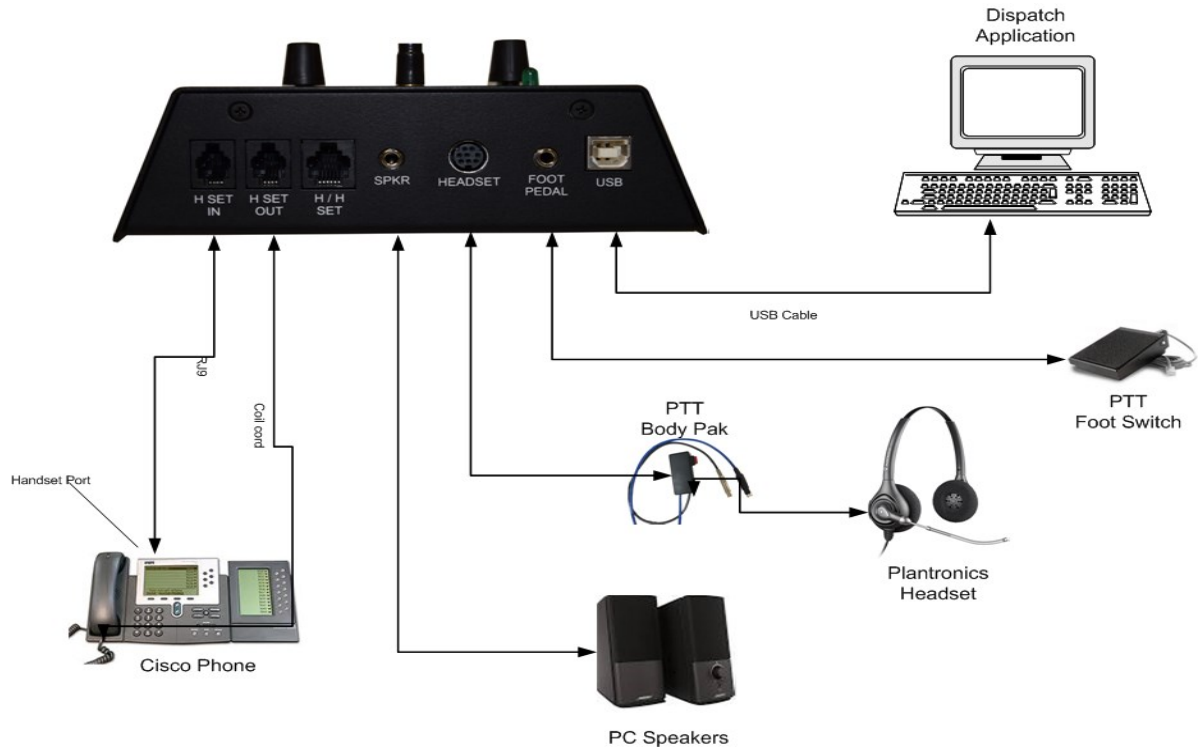
## Example 1



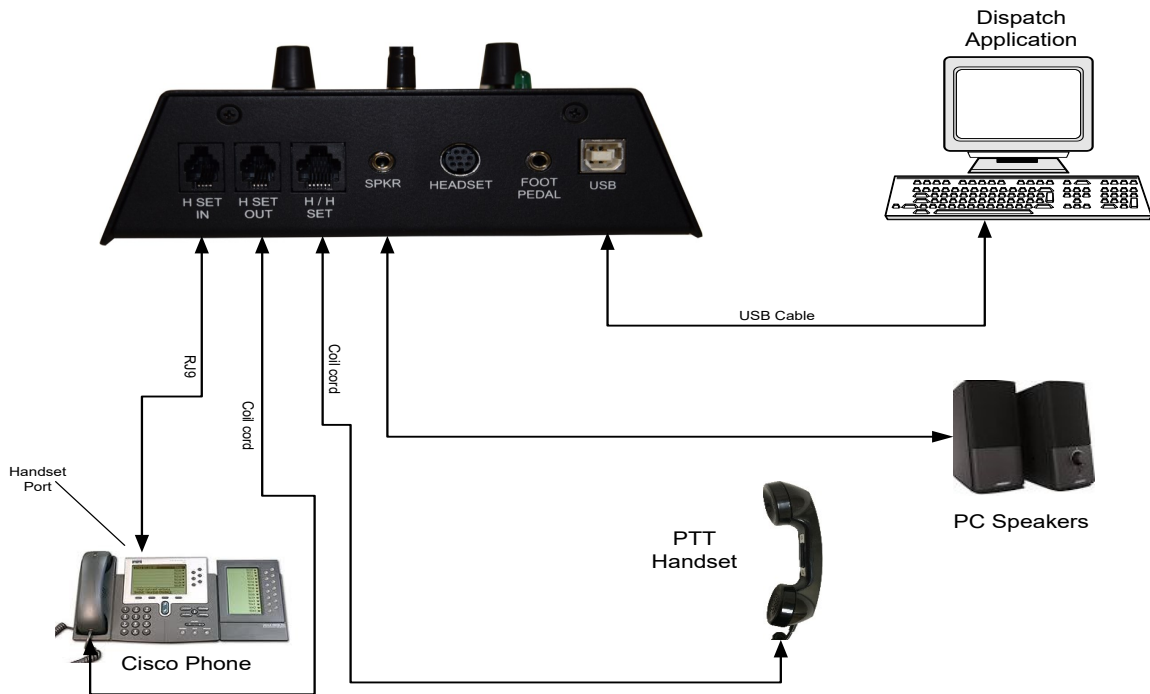
## Example 2



### Example 3



### Example 4



# VCC-3 Hardware Product Limited Warranty

ETC warrants that your ETC hardware product shall be free from defects in material and workmanship for the length of time specified in the Warranty Periods below, beginning from the date of purchase. Except where prohibited by applicable law, this warranty is nontransferable and is limited to the original purchaser. This warranty gives you specific legal rights, you may also have other rights that vary under local laws

## *Remedies*

ETC's entire liability and your exclusive remedy for any breach of warranty shall be, at ETC's option, (1) to repair or replace the hardware, or (2) to refund the price paid, provided that the hardware is returned to the point of purchase or such other place as ETC may direct with a copy of the sales receipt or dated itemized receipt. Shipping and handling charges may apply except where prohibited by applicable law. ETC may, at its option, use new or refurbished or used parts in good working condition to repair or replace any hardware product. Any replacement hardware product will be warranted for the remainder of the original warranty period or thirty (30) days, whichever is longer or for any additional period of time that may be applicable in your jurisdiction. This warranty does not cover problems or damage resulting from (1) accident, abuse, misapplication, or any unauthorized repair, modification or disassembly; (2) improper operation or maintenance, usage not in accordance with product instructions or connection to improper voltage supply; or (3) use of consumables, such as replacement batteries, not supplied by ETC except where such restriction is prohibited by applicable law.

## *How to Obtain Warranty Support*

Before submitting a warranty claim, we recommend you contact ETC support at [support@essentialtel.com](mailto:support@essentialtel.com) for technical assistance. Valid warranty claims are generally processed through the point of purchase during the first thirty (30) days after purchase; however, this period of time may vary depending on where you purchased your product - please check with ETC for details. Warranty claims or other product related questions should be addressed directly to ETC. at [support@essentialtel.com](mailto:support@essentialtel.com) or call (860) 295-8100 option 3 between the hours of 8:30 AM and 5:00 PM.

## *Limitation of Liability*

ETC SHALL NOT BE LIABLE FOR ANY SPECIAL, INDIRECT, INCIDENTAL OR CONSEQUENTIAL DAMAGES WHATSOEVER, INCLUDING BUT NOT LIMITED TO LOSS OF PROFITS, REVENUE OR DATA (WHETHER DIRECT OR INDIRECT) OR COMMERCIAL LOSS FOR BREACH OF ANY EXPRESS OR IMPLIED WARRANTY ON YOUR PRODUCT EVEN IF ETC HAS BEEN ADVISED OF THE POSSIBILITY OF SUCH DAMAGES. Some jurisdictions do not allow the exclusion or limitation of special, indirect, incidental or consequential damages, so the above limitation or exclusion may not apply to you.

©Essential Trading Systems Corps. All intellectual property rights in this publication are owned by Essential Trading Systems Corps. and are protected by United States copyright laws, other applicable copyright laws and international treaty provisions. Essential Trading Systems Corps. Retains all rights not expressly granted. No part of this publication may be reproduced in any form whatsoever or used to make any derivative work without prior written approval by Essential Trading Systems Corps. No representation of warranties for fitness for any purpose other than what is specifically mentioned in this guide is made either by Essential Trading Systems Corps. or its agents. Essential Trading Systems Corp. reserves the right to revise this publication and make changes without obligation to notify any person of such revisions or changes. Essential Trading Systems Corps. may make improvements or changes in the product(s) and/or the program(s) described in this documentation at any time. All rights reserved.