

CG-904SAM™ Gateway



At A Glance

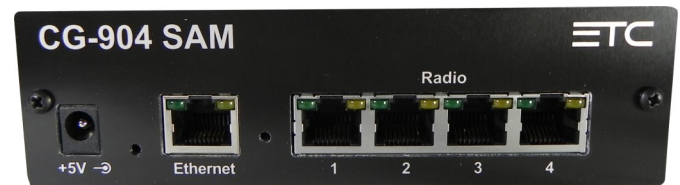
The **CG-904SAM™** is a VoIP Gateway capable of converting Standards based SIP and/or Multicast audio to full duplex 4-wire Analog audio.

For LMR applications the SAM provides a contact closure & audio delay feature for each Analog channel.

The **CG-904SAM™** utilizes browser based administration via secure login. Navigating to the **CG-904SAM™** features and functions are simple & intuitive making it a very user friendly VoIP gateway device.

Adjustable Audio Delay on each channel from 100ms to 500ms, allows transmitter time to fully key up, no clipped off words.

The Gateway can also operate in “**No PBX**” mode so it is able to “Call another Gateway directly.



CG-904SAM™

Features

- The SAM can convert up to 8 SIP to 8 Multicast Channels and can also connect to any of the above to the 4 channels of Analog.
- The web browser enables the user to configure any combination of SIP or Multicast to the 4 Analog I/O Ports.
- A total of 4 RJ-45 Modular Connectors are used for the Analog I/O Ports which are balanced 600 Ohm transformer isolated.
- The SAM uses Industry standard Codecs and solid state storage powered by our highly reliable Linux kernel OS.
- Easy & secure browser configuration/management Industry standard Codecs.
- Tx & Rx level adjustment on each channel
- Syslog output for device monitoring.
- Browser based diagnostic tools.
- LMR Functions, PTT (dry closure) Adjustable Audio Delay from 0-500 ms in 100ms steps.
- “No PBX” mode of operation Option.
- Half Rack Sized unit, rack or shelf mountable.

Technical Specifications

- 4 Analog to SIP and or Multicast channels
- Codecs: G.711 A & uLaw, G.729
- Protocols: RTP, UDP, TCP, Syslog, DHCP, NTP, IGMP, SSH, DHCP, DNS
- 4 Analog audio ports, 600 Ohm, Balanced, Transformer isolated, RJ-45s with dual LEDs
- LMR functions w/ adjustable Delay (100ms to 500ms) & PTT closure on each channel
- Analog audio range: -35 dB to -3dB
- Frequency Response: 300 Hz - 3kHz
- Distortion: < .2%, Latency < 50ms, ERL < -70
- 5 VDC, 5 Watts, 19 BTU/hr
- Size: W=5.5”/139.7 mm X H=1.625”/41.275 mm X L=6.5”/165.1 mm
- Weight: 13 oz / 369 g
- Upgradeable via firmware file upload
- Single Ethernet connection via RJ-45 jack

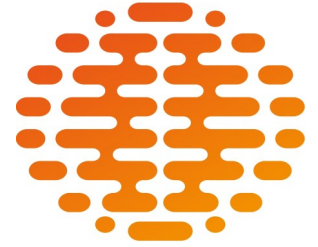


ESSENTIAL TRADING SYSTEMS CORP.

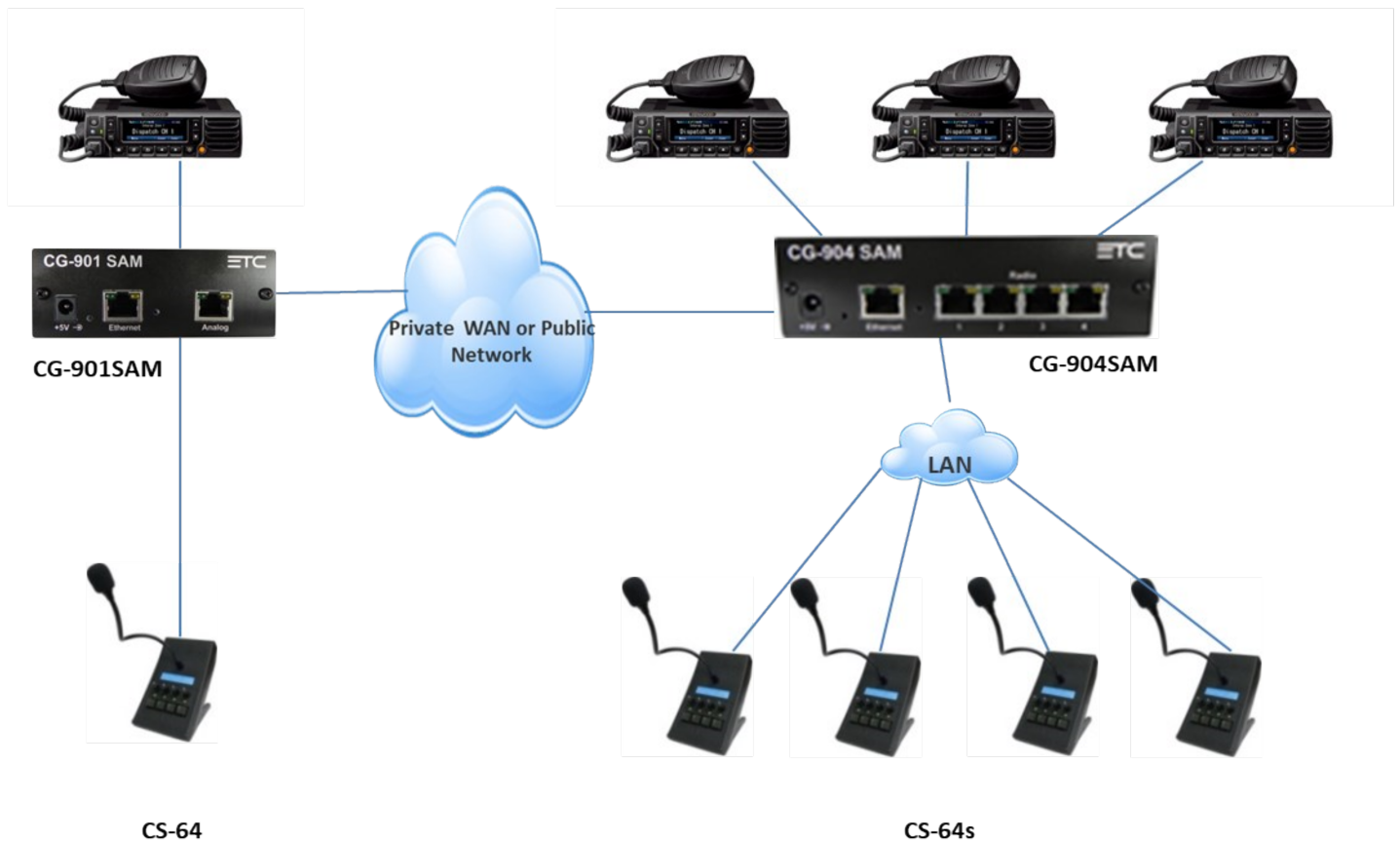
A Veteran Owned Small Business

www.essentialtradingsystems.com (860) 295-8100 sales@essentialtel.com

CG-904SAM™ Gateway Application



- Typical Applications of the CG-904SAM is in the mixing of two modes of operation which are SIP (station to station calls) and Multicast (call to many stations)
- The SAM can convert 8 SIP to 8 Multicast Channels and can connect up to 4 channels of Analog.
- At Remote Transceivers locations the CG-901SAM will use “No PBX” Mode in SIP to call into the CG-904SAM where the SIP Channels is converted to one of the Multicast Channels.
- The Analog Channels are connected to Radio Base Stations from 1 to 4 per Gateway In a LAN environment (office) multiple CS Stations can be connected using Multicast.
- Multicast eliminates the need for Cross Muting and the Echo and Time Delays associated with using SIP devices in close proximity to each other.
- Using the CG-90XSAM’s web browser the user can configure any combination of SIP or Multicast to the Analog channel Ports.
- In the Diagram below **All** CS-64 Stations can Receive and Transmit on all four Radios, regardless where they are in the Company.



ESSENTIAL TRADING SYSTEMS CORP.

A Veteran Owned Small Business

www.essentialtrading.com (860) 295-8100 sales@essentialtel.com